

Mac' Choc Pralines Collection

Mac' Saint Domingue

An exotic dark chocolate with a very strong 70% cocoa taste from Saint Domingue Caribbean Island in a dark chocolate macaroon shell

Approximately 100 pc per kilo.

Approximately 10 g per pc.

MCH 1



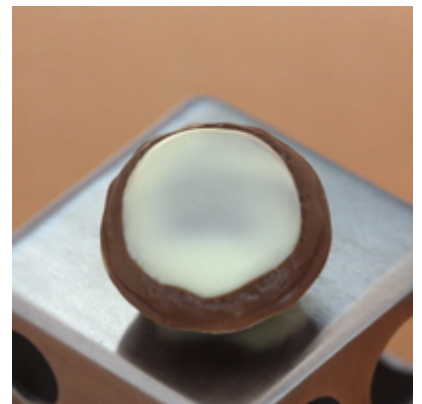
Mac' Cappuccino

A creamy cappuccino praline flavored with Kahlua in a white and milk chocolate macaroon shell.

Approximately 100 pc per kilo.

Approximately 10 g per pc.

MCH 2



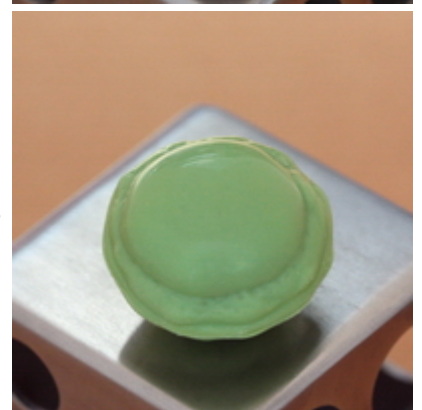
Mac' Pistachio

A pistachio praline with crispy flakes in a green chocolate macaroon shell.

Approximately 100 pc per kilo.

Approximately 10 g per pc.

MCH 3



Mac' Truffle-Hazelnut

A hazelnut and almond praline, flavored with white truffle oil drop in a milk chocolate macaroon shell.

Approximately 100 pc per kilo.

Approximately 10 g per pc.

MCH 4



Mac' Crème Brûlée

A white chocolate ganache,
crème brûlée flavored
in a white chocolate macaroon shell.

Approximately 100 pc per kilo.

Approximately 10 g per pc.

MCH 5

